

WebUI Studio.NET® 2008 R2 SP1 Release Notes

➤ Enhancements in WebUI Studio.NET 2008 R2 SP1

WebCombo.NET

- Full support for Google Chrome browser.
- Full support for LINQ to SQL enabling blazing fast data retrieval and operation.
- Updated documentation which includes how to use WebCombo with LinqDataSource along with LINQ to SQL technology.
- Disables specific WebCombo's row is now available to be implemented.

WebDesktop.NET

- Full support for Google Chrome browser.
- Move and Size menu in WebDesktopManager's context menu is now implemented.
- WebNotification position is now automatically updated according to the specified DisplayPosition when the browser is resized.

WebGrid.NET Enterprise

- Full support for Google Chrome browser.
- Full support for LINQ to SQL enabling blazing fast data retrieval and operation.
- Added IsRowHeader to column object.
- Updated documentation which includes how to use WebGrid with IsLinqDataSource along with LINQ to SQL technology.

WebScheduler.NET

- Full support for Google Chrome browser.
- Quarter zoom-level in Timeline drilldown.
- Added four view modes in Timeline view: Month view, Week view, DayHourly, and Day15Minutes views.
- Supports Decimal data type in WebScheduler. - Added OnEventBound client side event in Timeline view.
- Supports multiple cell selection in Day, Week, Month, Timeline and SplitView mode.
- Displays date range of events and multiple cell selected in callout and built-in editing form.
- Displays date range of events in event detail of Agenda view.
- Selected resources are automatically selected in callout and built-in editing form when user clicks in empty cell in timeline view.
- Added Tooltip property in Event object, which will be displayed when as event's tooltip in Day, Week, Month and Timeline view mode.
- In built-in editing form, user can enlarge the Description textarea for broader view.

- In Insert, Update, and Delete Event, Type parameter is added to indicate which data table is being updated.
- Updated documentation which includes 4 view modes in Timeline view and One-click View Switching as its new feature.

WebAqua.NET

- Improves performance to flow logic and animation.
- WebCoverFlow now supports item template while enabling VirtualFlow (Load-on-Demand) at the same time.
- Supports for Silverlight 2.0 RTW.

➤ Fixes in WebUI Studio.NET 2008 R2 SP1

WebCombo.NET

- When placed inside WebCallOut, the WebCombo's dropdown is not rendered and cannot be clicked. Occurs in Firefox Mozilla, and Safari only.
- Text overlapped the dropdown area in Safari/Chrome browser.
- Dropdown list is forcibly closed when the vertical scrollbar is dragged/clicked in Chrome browser.
- Default text selection is lose after item selection in Chrome browser.
- Multiple selection text does not appear on first load in Chrome browser.
- Dropdown list is shown at incorrect position when its container is scrolled down.
- Dropdown area is not rendered properly after the WebCombo is updated using ASP.NET AJAX and the page is using XHTML doctype.
- When used in unbound mode and integrated with WebGrid, the linked WebCombo does not synchronize properly with the parent WebCombo after several editing.

WebDesktop.NET

- Unable to drag the splitter to the right when WebPaneManager is used in Safari and Google Chrome.
- When using WebService type, WebNotification is not displayed. Occurs in Safari and Google Chrome only.
- Unable to use WebFlyPostBackManager in Synchronous mode. Occurs in FireFox Mozilla only.
- WebInput value does not reflect the changes when its value is changed using WebFlyPostBackManager. Occurs in Safari and Google Chrome only.
- In WebDragDropExtender integration with WebDesktopManager scenario, the drag indicator doesn't show correct sign when the Window has been minimized.
- Script error occurs when closing WebTabItem before the content is completely loaded.

- ScriptDirectory property of PlaceholderManager in WebDesktop.NET 2.5 is still pointing to version 2.0.
- "Can't execute code from a freed script" error message occurs when closing WebDialogBox if IntegratedToDesktopManager property is set to "True".
- Unable to pass array-type value from client side to server side using WebFlyPostBackManager.NET.
- When placed in the same page as WebGrid, WebDragDropExtender now works after performing RefreshAll in WebGrid.
- Regression: WebDesktopWindow does not load external site properly when ShowLoader property is set to true. Only occurs in IE browser.
- 'Unexpected call to method or property access' error message occurs when opening a new window after refreshing the content in WebPaneManager.
- Unable to load the IFrame content of WebDialogBox when it is reloaded. - Unable to load the content of WebTab when using IFrame content.

WebGrid.NET Enterprise

- When ButtonImage is clicked, the page performs postback. Occurs in Safari and Google Chrome only.
- When grouping and column freezing are enabled in WebGrid, the header and column line are not synchronized when the grid is scrolled horizontally. Occurs in Firefox Mozilla only.
- Error occurs during sorting process when WebGrid is used with ASP.NET AJAX ScriptManager.
- The status bar's icons are not highlighted when hovered after performing RefreshAll in client side.
- Custom menu cannot be added specifically on each WebGrid's export context menu when there are more than one WebGrid in the same page.
- Error occurs when expanding PreviewRow when grouping and LoadOnDemand in PreviewRowSettings are enabled.
- Button's click event is now invoked when it is placed inside WebGrid template and paging is enabled.
- Script error occurs when clicking the new row and InProgressUIBehavior and VerboseEditingInformation are enabled.
- Update event is not invoked when clicking outside the grid after editing the row. Occurs in FireFox Mozilla 3 only.
- SetForceNoEdit client side method does not work in checkbox-typed column.
- WebGrid's header is truncated when exported to PDF format.

WebScheduler.NET

- In built-in editing form, WebCombo's dropdown is incorrectly displayed when the container is scrolled. (needs the latest editingform.aspx)

- Unsynchronized selected date between calendar and scheduler view will occur when clicking on calendar's cell when Timeline view is active.
- When AllowCreateEventInHoliday is set to False, user can still add event in holiday when the active view is Month view.
- In Agenda view, events can still be edited and deleted even though DisableEdit and DisableDelete are set to False.
- The previous selected event is still highlighted when an empty cell is clicked in Timeline view.
- Unable to see the dragged event in Timeline view when there are more than one event in a cell.
- In Timeline view, the resources rows are shrunk after several cell selection. Occurs in Safari and Google Chrome only.
- In Timeline view, the events will be incorrectly rendered when resources are selected and unselected. Occurs in Safari and Google Chrome only.
- Unable to view events that starts and ends in different month when the work week view is activated.
- Incorrect event rendering occurs when updating all day event that occurs at the end of the week.
- When EmptyCellClickAction is set to ShowEditingForm, the editing form is displayed when all day event area is right clicked.
- Incorrect event rendering when navigating from Month view to Week view using the week header.
- Script error occurs when clicking week header that only has outbound cells.

WebAqua.NET

- Incorrect full screen function in WebCoverFlow.NET for ASP.NET.
- Clipping issue occurs when WebFishEye.NET for ASP.NET is docked to left and right.
- When stack button in WebFishEye.NET is opened, the silverlight area will be expanded according to the height of the stack button only.

WebInput.NET

- Error occurs when WebInput with date masking enabled is placed inside an Update Panel.
- WebInput duplicate existing stylesheets during postback.
- "Object reference not set to an instance of an object" error message occurs during postback when DisplayFormat is programmatically specified at runtime. WebInput value is not persisted in server side during FlyPostback action.
- The time format of WebInput is always AM even though the current time is PM.

WebTreeView.NET

- Error occurs when Visible is set to False and full postback is performed.
- Script error occurs when WebTab's url is changed when a node is selected.
- OnNodeSelect client side event is invoked more than once each time a node is selected.
- Error occurs when a node is selected for the first time and the next navigation is performed using keyboard.
- When rtl is enabled, the hovered node becomes invisible.
- VS2008 stops responding when WebInput is dragged and dropped from toolbox to the page.
- The dropdown arrow is not changed into gray color when the WebInput is disabled.

Overview

Welcome to WebUI Studio.NET® 2008 R2 SP1, the most anticipated Web Component Suite for ASP.NET® 2.0 and Silverlight 2.0 Beta 2.

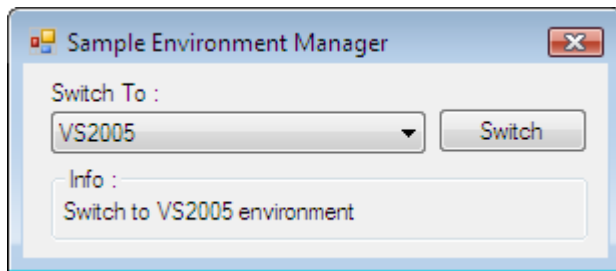
WebUI Studio.NET 2008 R2 SP1 is here pushing the standard of Web UI beyond with the strong focus on Silverlight-based components, enterprise-standard scheduling, planning, and calendaring component, as well as the best-selling data grid component. It includes:

- WebGrid.NET Enterprise® 6.0 (Enhanced version).
- WebAqua.NET® 2.0 (New version).
- WebScheduler.NET® 2.0 (New version).

Intersoft Solutions proudly presents the innovation of WebUI Studio.NET® 2008 R2 SP1, as a symbol of gratitude to our loyal customers in using and trusting our Web solutions as well as the enthusiasm from our prospects in developing their Web application with upfront technology. WebUI Studio.NET® 2008 R2 is strongly focused on two themes, enterprise-level Scheduling features and futuristic Silverlight 2.0 UI components. This second release delivers WebScheduler 2.0, which helps you instantly build powerful Scheduling and Projection applications that require advanced capabilities such as viewing resources in TimeLineView™ and TrueSplitView™ mode. It also delivers WebAqua.NET 2.0, long-anticipated Silverlight 2.0 UI components that resemble the future of Web UX.

Several notes for this R2 SP1 release:

- **Important notes:** *Upon installing the 2008 R2 SP1, the installer will detect the latest version of your Visual Studio. If the latest version is 2008, the installer will automatically set the samples environment to Visual Studio 2008. If you intend to switch to Visual Studio 2005 environment, you are required to use Sample Environment Manager. The Sample Environment Manager is located at **Start Menu >> All Programs >> Intersoft WebUI Studio.NET 2008 R2 >> ASP.NET >> Sample Environment Manager.***



- **WebUI Studio.NET® 2008 R2 SP1 supports side-by-side installation with older versions of WebUI Studio.NET. However, side-by-side installation with WebUI Studio.NET® 2008 R2 for Silverlight is not supported. It is highly recommended that you install this R2 version in a clean, non-primary development machine.**
- Enhancements in WebGrid.NET, WebCombo.NET and WebScheduler.NET. WebGrid and WebCombo now support LINQ TO SQL technology. WebScheduler also enhances its Timeline view to support 4 types of view, which are Month view, Week view, DayHourly and Day15Minutes.
- WebUI.NET Framework® 2008 assemblies will automatically replace older frameworks. The new assemblies are designed to have full backward compatibility support. Therefore, they can be safely used by older products.
- The new assemblies will have file version set to 3.0.5000.xxx. The release version is incorporated with WebUI.NET Framework version 3.0.5000.601.
- If you wish to install WebUI Studio.NET 2008 R2 in primary development machine, ensure that you have backed up all important projects before proceeding with the installation.
- This R2 release contains *complete-set features* along with some additional features and adjustments to existing features per beta user's feedback.
- Unless otherwise noted, all other features have been implemented in this R2 release according to the published roadmap. To read the 2008 R2 roadmap, please login to Developer Network and click on **2007 – 2008 Roadmap** in the Dashboard window (under Announcement panel).



In order to open and run Silverlight sample project, you are required to install **Microsoft Expression Blend** or **Visual Studio.NET 2008** along with **Silverlight 2.0 Beta 2 Add On**.

To quickly getting started:

- Launch Intersoft WebUI Studio.NET Live Samples from Intersoft WebUI Studio.NET 2008 R2 >> ASP.NET program group.
- Launch Intersoft WebAqua.NET Samples from Intersoft WebUI Studio.NET 2008 R2 >> ASP.NET program group.



- Launch Intersoft Silverlight Live Samples from Intersoft WebUI Studio.NET 2008 R2 >> Silverlight program group.
- Conveniently browse over 500 samples in the rich user interface with streamlined navigation.

We thank you for your continuous support and look forward to your contributions.

We hope you enjoyed this R2 SP1 release, as we have been enjoyed making this release a great experience for you.

Best Regards,
Core Development Team.